



SHELL GLAZING SOLUTION

SHELL GLAZING SOLUTION



WE PROVIDE :

- Sliding Windows , Sliding Door.
- Lift & Sliding Door.
- Casement Windows, Swing windows, France Door.
- Fixed Window
- Tilt-turn window Euro Standard .
- Bi-Folding Door, Frameless Glass Folding Door.
- Facade work (Curtain wall, Spider, ACP, Railing)
- Aluminum Louver work.

QUALITY IS OUR COMMITMENT

SHELL GLAZING SOLUTION



About Us :

Shell Glazing Solution is introducing double glazed window and door to Bangladesh market in a commercial basis.

Our double glazed window and door are having the feature of sound and heat insulation. Using our double glazed window and door customer can save 15~20% energy cost on AC electric consumption. It is internationally accepted that double glazed glass can save energy up to 25% of the air conditioner electric consumption and reduce noise up to 50~60%. Countries like CANADA, AUSTRALIA, and EUROPEAN UNION have introduced for their made the building code that all construction should be install Double glaze glass to conserve energy and protect human health by reducing outside noise that cause harm to human body.

VISION and MISSION :

Shell Glazing Solution starts its business with a mission to introduce international standard building materials in Bangladesh market. Shell Consultant & Solution is working relentlessly to increase general awareness about the effect of sound pollution on human health and how to save energy by using Double glazed glass to the window and door.

QUALITY IS OUR COMMITMENT



SHELL GLAZING SOLUTION

Sliding windows :

- Tandem adjustable brass rollers
- Clam type manual & Auto lock
- Heavy duty extruded screen with adjustable rollers
- Optional Retrofit fin, for installation without stucco damage
- Heavy duty 5 1/2" frame depth
- Available in standard & custom sizes
- Energy –Saving Design
- Multiple choice of Glass, single or double
- Good performance of air-tight water-proof and sound proof



QUALITY IS OUR COMMITMENT

SHELL GLAZING SOLUTION



Lift & Sliding Door :

- Lift & Sliding Door of the performance door.
- Lift slide system locks the panels down into the sill when closed, sealing itself with built in gaskets and locking pressure.
- Lift & slide doors can be arranged in nearly unlimited configurations of operable and fixed panels, providing the variety and flexibility that the architect desired.
- High performance lift & slide doors Solar Innovations.
- Water performance, and thermal performance High.
- Combined with the lift & slide Door system's water performance, the doors well suited to resist harsh coastal weather.
- Insulated glazing (1 ¼") able to both increase thermal and energy performance.
- Lift & Sliding Door specially multi-slide door system incorporates a European inspired design.
- With the use of a large leverage handle, the operator engages a double v-gasket seal at the top and bottom of the door by turning the handle to lock the door.



QUALITY IS OUR COMMITMENT

SHELL GLAZING SOLUTION



Casement, Swing Window & France Door :

- Single & Double Glazing
- Heavy duty hardware
- 90 degrees easy open
- Multi Locking Systems
- Water & Air tightness
- Energy Saving & Secure
- Water Proof & easy installation
- Special Design Style Which is popular & raining areas
- Different Surface Treatment is available
- Application: Apartments, School, Building in raining areas



QUALITY IS OUR COMMITMENT

SHELL GLAZING SOLUTION



Fixed Window :

- Relatively inexpensive
- Enhances perceived spaciousness
- Single & Double Glazed Unit
- Multiple Combinations
- Sleek Design
- 90 Degree corner joint



QUALITY IS OUR COMMITMENT



SHELL GLAZING SOLUTION

Tilt-turn window Euro Standard :

- Single & Double Glazing
- Heavy duty hardware
- Multi Locking Systems
- Water & Air tightness
- Energy Saving & Secure
- Tilt-turn window high thermal performance window.
- Tilt and turn window is essentially three different window types in one. It is a fixed window, inswing, as well as a hopper window.
- The window is operated with a handle that is located on either the left or right side of the window. Turning the handle 90 degrees will allow you to fully open your window inward. With the handle at 180 degrees, the window will tilt open from the top.



QUALITY IS OUR COMMITMENT

SHELL GLAZING SOLUTION



Bi-Folding Door :

- Single & Double Glazing
- Various choice for wide and height(max width 6000mm, height 2400mm,3000mm)
- Heavy duty hardware
- Top Bottom multi rollers system
- Multi Locking Systems
- Water & Air tightness
- Energy Saving & Secure
- Water Proof & easy installation
- Illusion of extra space and ingress of natural light
- Opening room up to outside
- Impressive functionality and security
- Slim and good looking
- Energy efficient and eco friendly



QUALITY IS OUR COMMITMENT

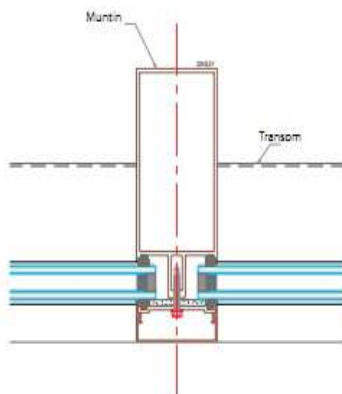
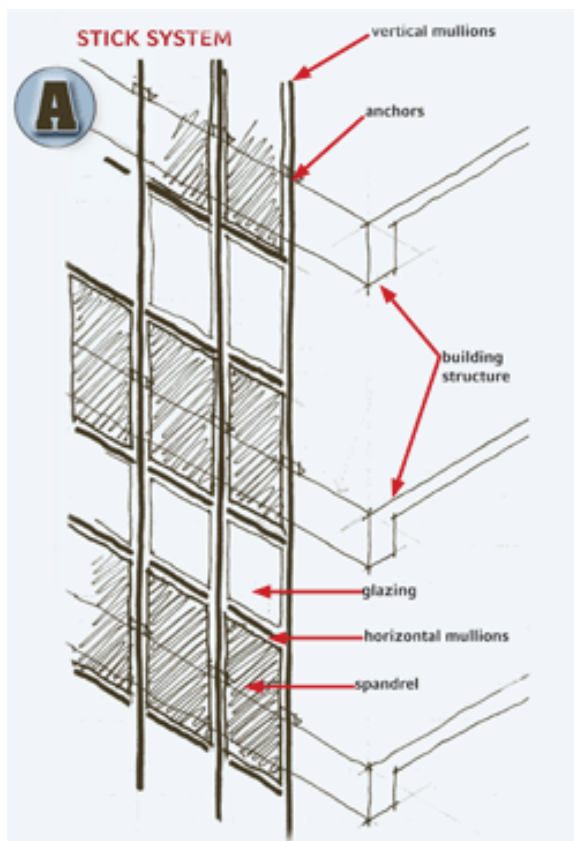


SHELL GLAZING SOLUTION

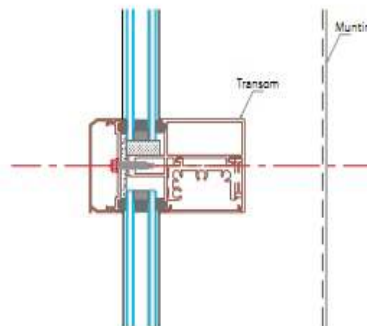
Curtain-wall :

A Curtain-wall outer walls are non-structural, but merely keep the weather out and the occupants in. As the curtain-wall is non-structural it can be made of a lightweight material, reducing construction costs. When glass is used as the curtain-wall, a great advantage is that natural light can penetrate deeper within the building. The curtain-wall façade does not carry any dead load weight from the building other than its own dead load weight. The wall transfers horizontal wind loads that are incident upon it to the main building structure through connections at floors or columns, of the building. A curtain-wall is designed to resist air and water infiltration, swing induced by wind and seismic forces acting on the building and its own dead load weight forces.

Curtain-walls differ from store-front systems in that they are designed to span multiple floors, and take into consideration design requirement such as: thermal expansion and contraction; building sway and, cooling, and lighting in the building.



(DETAILED SECTION OF VERTICAL)



(DETAIL SECTION OF HORIZONTAL BAR)

Structure of Stick systems without decorative aluminum capping

QUALITY IS OUR COMMITMENT



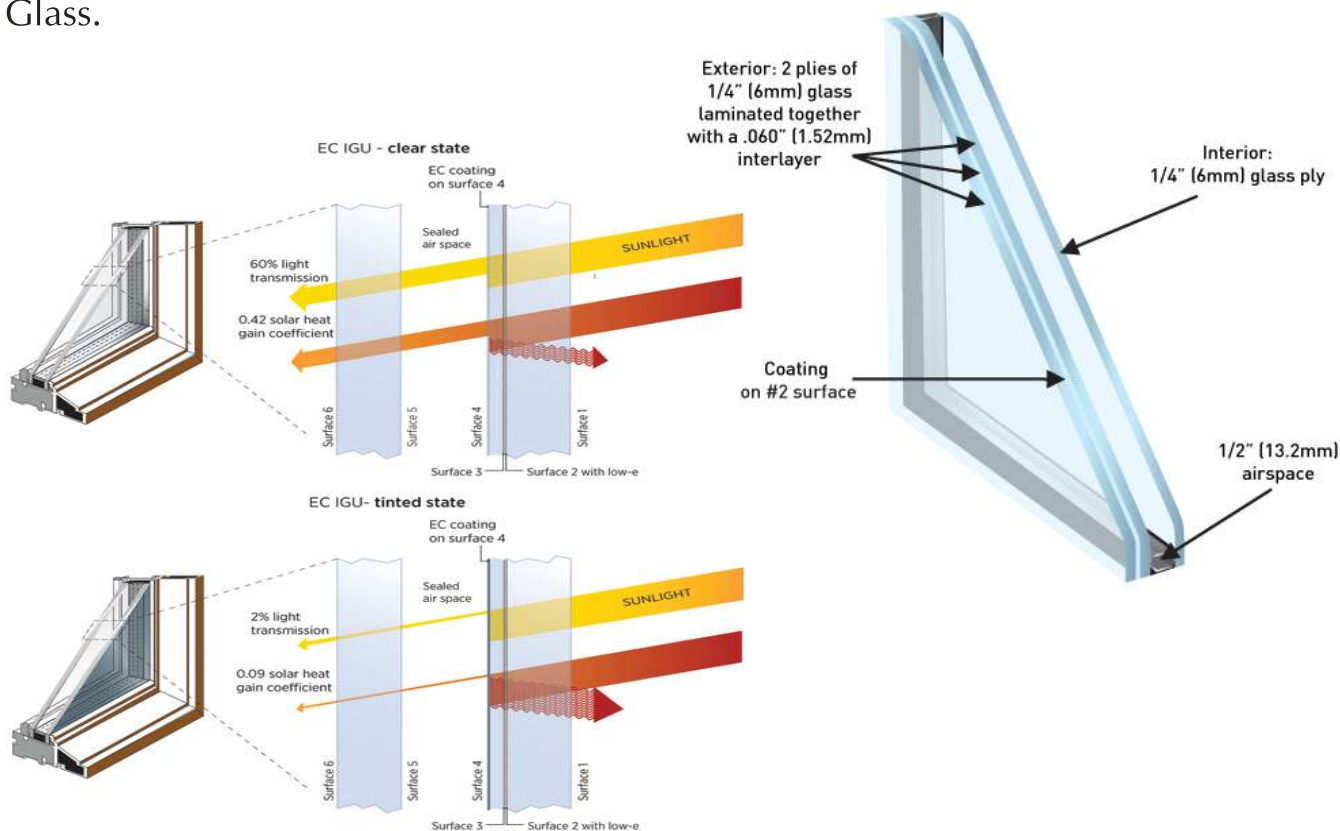
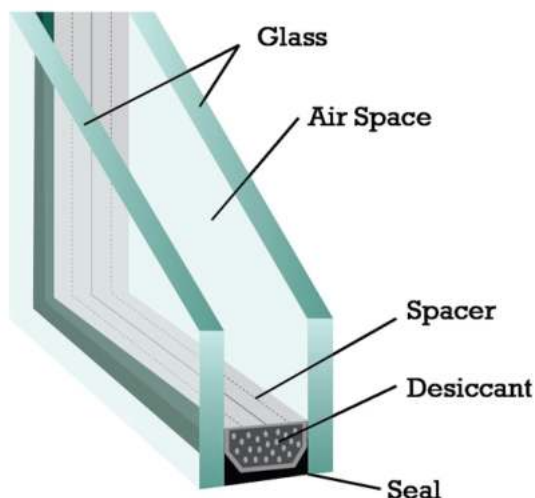
SHELL GLAZING SOLUTION

Insulating Glass :

Insulating glass (also referred to as insulated glass) refers to two or more lights of glass sealed around the edges with an air space between, to form a single unit.

Commonly referred to as an 'IG unit,' insulating glass is the most effective way to reduce air-to-air heat transfer through the glazing. When used in conjunction with low-E and/or reflective glass coatings, IG units become an effective means to conserve energy and comply with building codes. The most common architectural insulating glass unit configuration is 1/4" glass/1/2" air space/1/4" glass.

Get The Complete Inside Story on Insulating Glass.



QUALITY IS OUR COMMITMENT

SHELL GLAZING SOLUTION



Specifications :

Insulated glass/Hollo glass/IGU/Double glazing glass production Capability:

Max size: 2133mm x 2591mm (except for manual production)

Min size: 180mm x 350mm air or argon spacer gap: 6mm, 8mm, 10mm, 12mm, 15mm, 16mm

Glass thickness: 5mm+10A+5mm, 6mm+8A+6mm, 8mm+12A+8mm, 8mm+16A+8mm, etc.

Colour: low-E, light blue, drack blue , ocean blue , light grey ,blue bronze.

Competitive Advantage:

Insulated glass/Hollo glass/IGU/Double glazing glass performance features.

- Insulated glass/Hollo glass/IGU/Double glazing glass filled with the inert gas is excellent in heat and sound insulation, meeting the requirement for saving energy and environmental protection.
- Hoarfrost and dew effect can be eliminated.
- High wind pressure strength.
- Not easy to be self exploded.
- Noise insulation.

Laminated Glass:

Two or more lets (pieces) of glass permanently bonded together with one or more plastic interlayers (PVB) using heat and pressure.

The glass and interlayers can be a variety of colours and thicknesses designed to meet building code standards and requirements as necessary.

QUALITY IS OUR COMMITMENT



SHELL GLAZING SOLUTION

Laminated Glass :

can be broken, but the fragments will tend to adhere to the plastic layer and remain largely intact, reducing the risk of injury.

Laminated glass is considered “safety glass” and meets the requirements of the various code organizations that set standards for safety.

Heat-strengthened and tempered glass can be incorporated into laminated glass units to further strengthen the impact resistance.

Hurricane resistance, the need for bomb blast protection, sound attenuation and ballistic or forced-entry security concerns are all primary uses for laminated glass. Sun Guard laminated Glass - Safety and Hurricane Protection

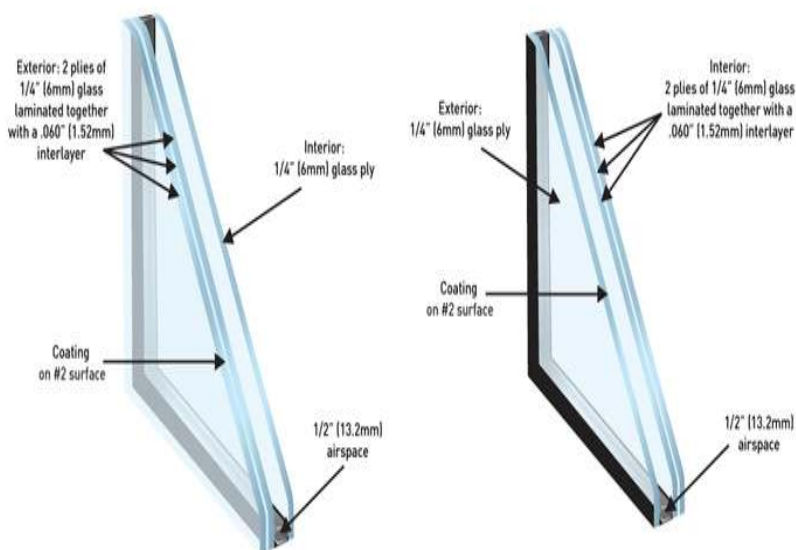
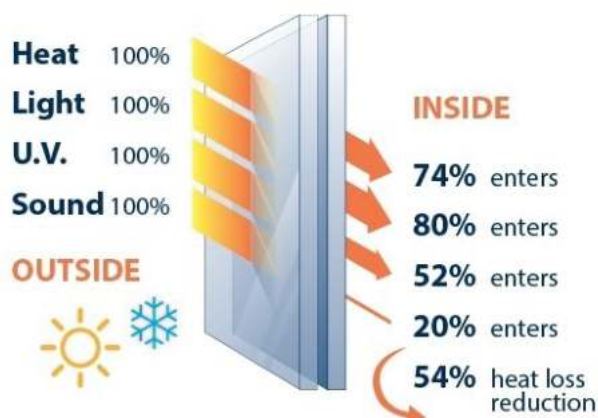
Excellent Solar Control Can provide sound attenuation, security, safety and hurricane protection.

Passes Hurricane small and large missile tests

A variety of glass make-ups to suit virtually any project

Many performance and appearance options

Faster delivery than most competitors
Available through independent.



QUALITY IS OUR COMMITMENT

SHELL GLAZING SOLUTION



Frameless Glass Folding Door



France Door Window



Glass Railing



Shower Door



Aluminium Louver



Shower Door



Glass Stair

QUALITY IS OUR COMMITMENT

SHELL GLAZING SOLUTION

OUR PROJECTS :



THE CITY BANK TOWER (Matrix Architects), Abdullahpur, Dhaka.



MASTER KASHEM RESIDENCE (D'Sense Architects), Sitakundu, Chittagong.



THE SHOES BANGLADESH LTD. (Chinton Architects), Ashulia, Savar.



MASHALLAH TRADE CENTER, Basundhara R/A, Dhaka.



MD. NUR AZAM RESIDENCE (Design Studio), Mohipal, Feni.

QUALITY IS OUR COMMITMENT

SHELL GLAZING SOLUTION

OUR PROJECTS :



BOMETTA (Primodial Properties), Banani DOHS, Dhaka.



NAYLA WATER-FALL (ZICON GROUP), Shreemongal.



MOSHAROF RESIDENCE (Rancon Development), Gulshan-01, Dhaka.



NAVY WARDROOM (Studio Chittagong), Chittagong.



ABUL KALAM AZAD RESIDENCE (Ayoteek Architects), Nikunjo-01, Dhaka.

QUALITY IS OUR COMMITMENT

SHELL GLAZING SOLUTION

OUR PROJECTS :



AL-HAZZ NURUL ISLAM RESIDENCE
(D'Sense Architects), Laksam, Comilla.



SABUJ MIAZI RESIDENCE, Basundhara R/A, Dhaka.



MRS. KHURSHIDA RESIDENCE (DWm4 Architects),
Basundhara R/A, Dhaka.



RUHUL AMIN RESIDENCE (Studio'9), Chaddogram, Comilla.



ALLIANCE ANONDOMELA (Alliance Properties),
Uttara, Dhaka.



DR. BAZID KHOOLSHID RESIDENCE (Aastha Architects), Purbachal, Dhaka.



ALLIANCE ALTAIR (Alliance Properties),
Basundhara R/A, Dhaka.

QUALITY IS OUR COMMITMENT

SHELL GLAZING SOLUTION

OUR PROJECTS :



MD. ATIQUE RAHMAN RESIDENCE, Basundhara R/A, Dhaka.



HOTEL HERITAGE INN (Bestway Group), Rajshahi.



DR. MOHAMMAD ALI RESIDENCE, Basundhara R/A, Dhaka.



MK RANA RESIDENCE (Contemporist), Nikunjo-01, Dhaka.



ANIRUDHA KAHALY (Phd.) Residence, Aruna Polli, Savar.



CONCORD TARULATA (Zia Chowdhury) (River & Rain Architects),
Dhanmondhi, Dhaka.



MATTRA ARCHITECT, Gazipur.

QUALITY IS OUR COMMITMENT

SHELL GLAZING SOLUTION



Our Partners :



Contribute the best products to the human



PILKINGTON



SAINT-GOBAIN

KIN LONG 坚朗

Construction Hardware Expert

建筑五金专家

Kinex
坚宜佳

海贝斯

新安东
— SINCE 1963 —



坚朗·君和

GTI
香港泰泰

Zrenite
特灵

HOPPO®

SIEGENIA®

brings spaces to life

At "SHELL GLAZING SOLUTION" Our mission is to provide a comfortable and luxurious experience to our clients by offering them a total solution of Glass and Aluminium frame work at an affordable price. We believe in quality and class and aim to redefine modern homes and office in Bangladesh by providing a 360 degree Glass work solution under one roof.

QUALITY IS OUR COMMITMENT



SHELL GLAZING SOLUTION

SCS

SHELL GLAZING SOLUTION

SLIDING ! LIFT AND SLIDING ! CASEMENT WINDOW ! FRANCE DOOR ! WINDOW !
TILT-TURN WINDOW ! BI-FOLDING DOOR ! CURTAIN-WALL ! GLASS RAILING! ACP.

Corporate Office : House no-06, Road-18, Nokunjo-02, Khilkhet, Dhaka-1229.

Contact no : +880 1677 333167, +880 1892 952374, +880 1863 781013, +880 1681 622015.

Email: shellconsultantinfo@gmail.com

Website : www.shellglazing.com, www.facebook.com/shell.consultant

QUALITY IS OUR COMMITMENT